

Synchron-Standard types 8-pole

17/01/2024

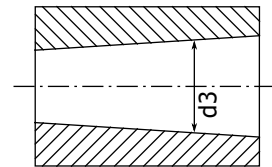
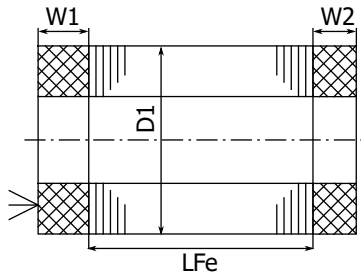
Power

Continuous power for efficient water cooling

Speed	in krpm	0.5	1	1.5	2	2.5	3	3.5	4	4.5	5	6	8	10	12	15
Frequency	in Hz	34	67	100	134	167	200	234	267	300	334	400	534	667	800	1000
Types (D1/LFe in cm)		Power in kW														
mSpW 16/8-8-s2r..		3	6	9	12	15	18	19.2	20	22	23	25	30	35	40	48
mSpW 16/11-8-s2r..		4.2	8.3	12.5	16.7	21	25	27	29	31	33	37	44	52	60	72
mSpW 16/15-8-s2r..		5.8	11.5	17.2	23	29	34	37	40	42	45	50	60	70	81	96
mSpW 16/20-8-s2r..		7.8	15.7	24	31	39	47	50	54	57	60	67	80	94	107	127
mSpW 16/26-8-s2r..		10.5	21	31	42	52	63	68	74	80	85	96	119			
mSpW 18/11-8-s2r..		5.5	11	16.5	22	27	33	36	38	41	43	48	58	68	79	
mSpW 18/15-8-s2r..		7.6	15.2	23	30	38	46	49	52	55	58	65	78	91	104	
mSpW 18/20-8-s2r..		10.5	21	31	42	52	63	66	70	74	77	85	99	114	129	
mSpW 18/26-8-s2r..		13.6	27	41	54	68	82	86	91	96	101	110	129	148	167	
mSpW 18/30-8-s2r..		15.7	31	47	63	78	94	100	105	111	116	127	149	171	193	
mSpW 20/11-8-s2r..		6.5	13.1	19.6	26	28	29	30	32	33	34	37	42	48	53	
mSpW 20/15-8-s2r..		9.1	18.3	27	37	39	40	42	44	46	48	52	59	67	74	
mSpW 20/20-8-s2r..		12.6	25	38	50	53	55	57	60	62	65	69	79	88	97	
mSpW 20/26-8-s2r..		16.5	33	49	66	69	72	75	78	80	83	89	100	112	123	

Dimension sheet

Sketch



Main dimensions all dimensions in mm	Stator			Rotor	
	Outer diameter D1	Length of winding head W1 W2		Bore d3	max. speed in krpm
Typ D1/LFe in cm		with PTC		at nominal point	
mSpW 16/ .. -8-s2r..	160	43	30	101	18
mSpW 18/ .. -8-s2r..	180	44	34	114	15
mSpW 20/ .. -8-s2r..	200	46	33	129	13